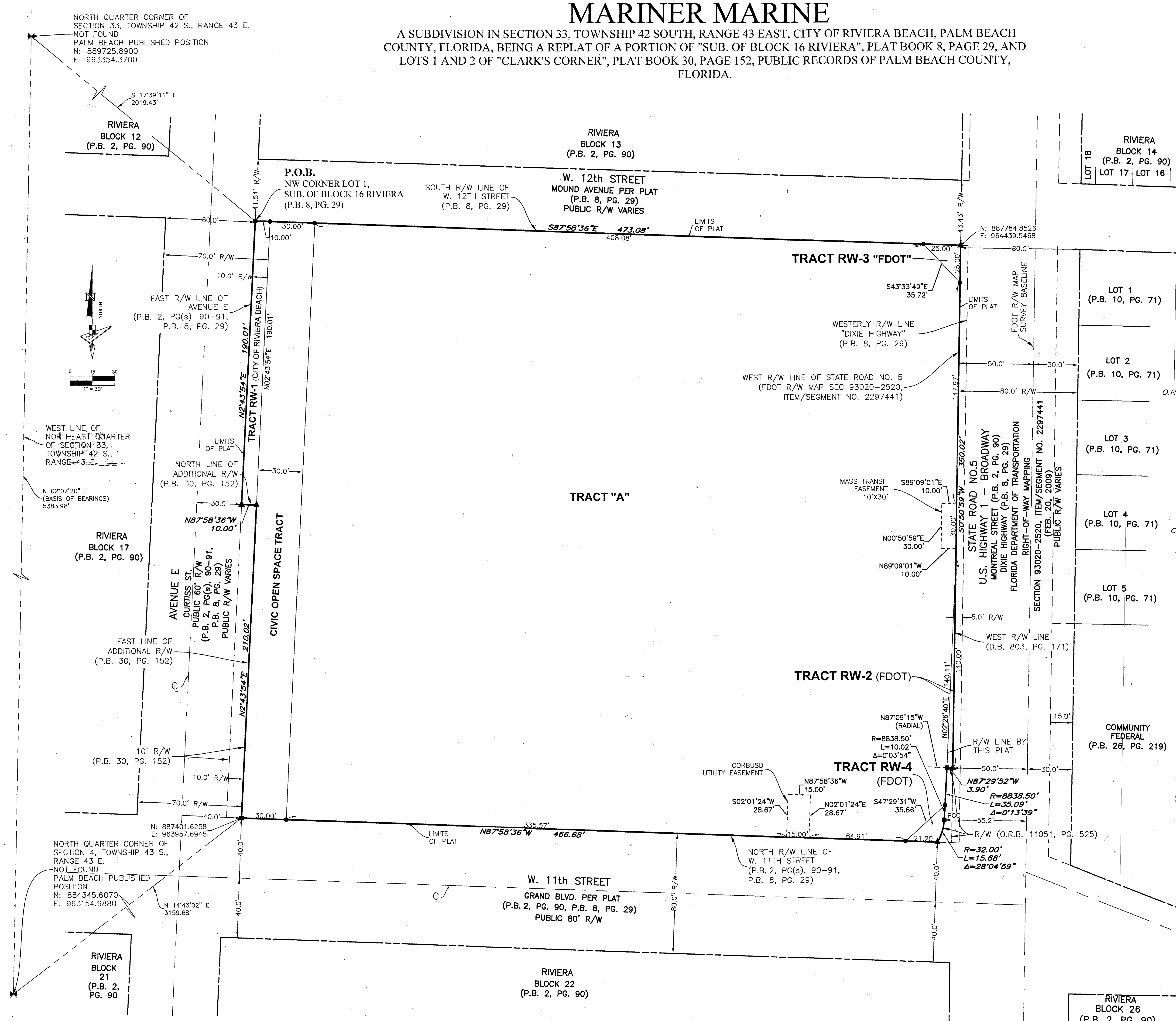


165

MARINER MARINE

A SUBDIVISION IN SECTION 33, TOWNSHIP 42 SOUTH, RANGE 43 EAST, CITY OF RIVIERA BEACH, PALM BEACH COUNTY, FLORIDA, BEING A REPLAT OF A PORTION OF "SUB. OF BLOCK 16 RIVIERA", PLAT BOOK 8, PAGE 29, AND LOTS 1 AND 2 OF "CLARK'S CORNER", PLAT BOOK 30, PAGE 152, PUBLIC RECORDS OF PALM BEACH COUNTY, FLORIDA.



LEGEND

- P.B. ---- PLAT BOOK
- PG. ---- PAGE
- O.R./O.R.B. ---- OFFICIAL RECORDS BOOK
- P.O.B. ---- POINT OF BEGINNING
- U.E. ---- UTILITY EASEMENT
- P.B.C. ---- PALM BEACH COUNTY
- COS ---- CIVIL OPEN SPACE
- CL ---- CENTERLINE
- R/W ---- RIGHT-OF-WAY
- CL ---- CENTER LINE OF ROAD
- R ---- RADIUS
- L ---- ARC LENGTH
- Δ ---- DELTA ANGLE
- PCC ---- POINT OF COMPOUND CURVATURE
- FDOT ---- FLORIDA DEPARTMENT OF TRANSPORTATION
- CORBUSS ---- CITY OF RIVIERA BEACH UTILITY SPECIAL DISTRICT
- ★ ---- QUARTER SECTION LOCATION
- /PRM ---- SET PERMANENT REFERENCE MONUMENT, A 1 1/2" BRASS DISK STAMPED "PRM LB7768" IN A 4"x4" CONCRETE MONUMENT
- ---- SET IRON ROD WITH CAP "LB7768"
- ▲ ---- INDICATES (SPKD) SET NAIL & DISK LB7768
- ✱

STATE PLANE COORDINATE NOTES:

- ALL DISTANCES ARE GRID
- SCALE FACTOR = 1.0000457
- COORDINATE SYSTEM = 1983 STATE PLANE TRANSVERSE MERCATOR PROJECTION
COORDINATES SHOWN ARE GRID COORDINATES
- ZONE = FLORIDA EAST ZONE
- DATUM = NAD 83-1990 ADJUSTMENT
- GROUND DISTANCE X SCALE FACTOR = GRID DISTANCE
- LINEAR UNIT = U.S. SURVEY FEET
- PLAT BEARINGS = GRID BEARINGS
NO ROTATION

NOTICE: THIS PLAT, AS RECORDED IN ITS GRAPHIC FORM, IS THE OFFICIAL DERIVATION OF THE SUBDIVIDED LANDS DESCRIBED HEREIN AND WILL IN NO CIRCUMSTANCES BE SUPPLANTED IN AUTHORITY BY ANY OTHER GRAPHIC OR DIGITAL FORM OF THE PLAT. THERE MAY BE ADDITIONAL RESTRICTIONS THAT ARE NOT RECORDED ON THIS PLAT THAT MAY BE FOUND IN THE PUBLIC RECORDS OF PALM BEACH COUNTY.

THIS INSTRUMENT PREPARED BY
LUIS J. ORTIZ, P.S.M.
157006 STATE OF FLORIDA
GEOPOINT SURVEYING, INC.
4152 WEST BLUE HERON BOULEVARD, SUITE 105,
RIVIERA BEACH, FLORIDA 33404.
CERTIFICATE OF AUTHORIZATION NO. LB7768



4152 W. Blue Heron Blvd. Phone: (561) 444-2720
Suite 105 www.geopointsurvey.com
Riviera Beach, FL 33404 Licensed Business Number LB 7768